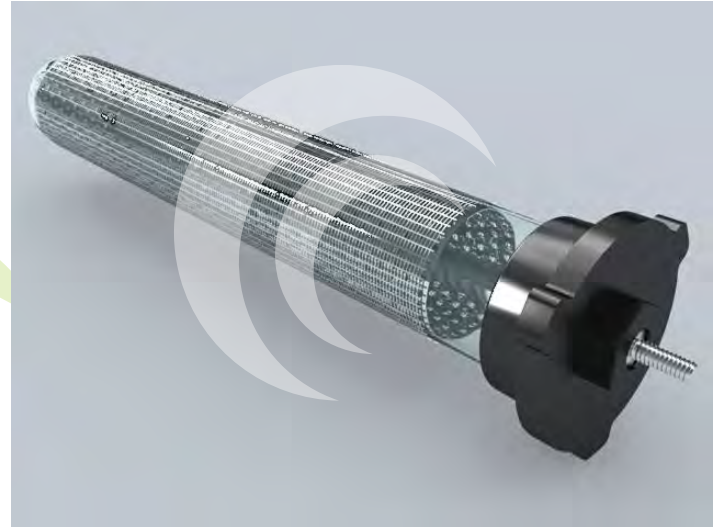


139 40th Street NE
Cedar Rapids, IA 52402

healthyliving-today.net
sales@healthyliving-today.net

KEY FEATURES

- Cell size is 250mm.
- Flexibility for all working environments.
- Hygienic for all production environments.
- 100% recyclable and biodegradable plastic without air polluting emissions.
- Cells may be installed and removed with a pair of pliers.
- Replacement required every 8,800 hours (12 months).



SPECIFICATIONS

SONA Cell 250mm	
Weight (incl screen)	153 grams
Power consumption	10 watts
Current draw	100mA

All specifications subject to change without notice.